

1940

PANORAMIC PHOTOGRAPH

**TAKEN IN THE PLAYGROUND
OF NORTHAMPTON
TOWN AND COUNTY SCHOOL**

IN 12 SECTIONS

1940



SECTION 1

1940



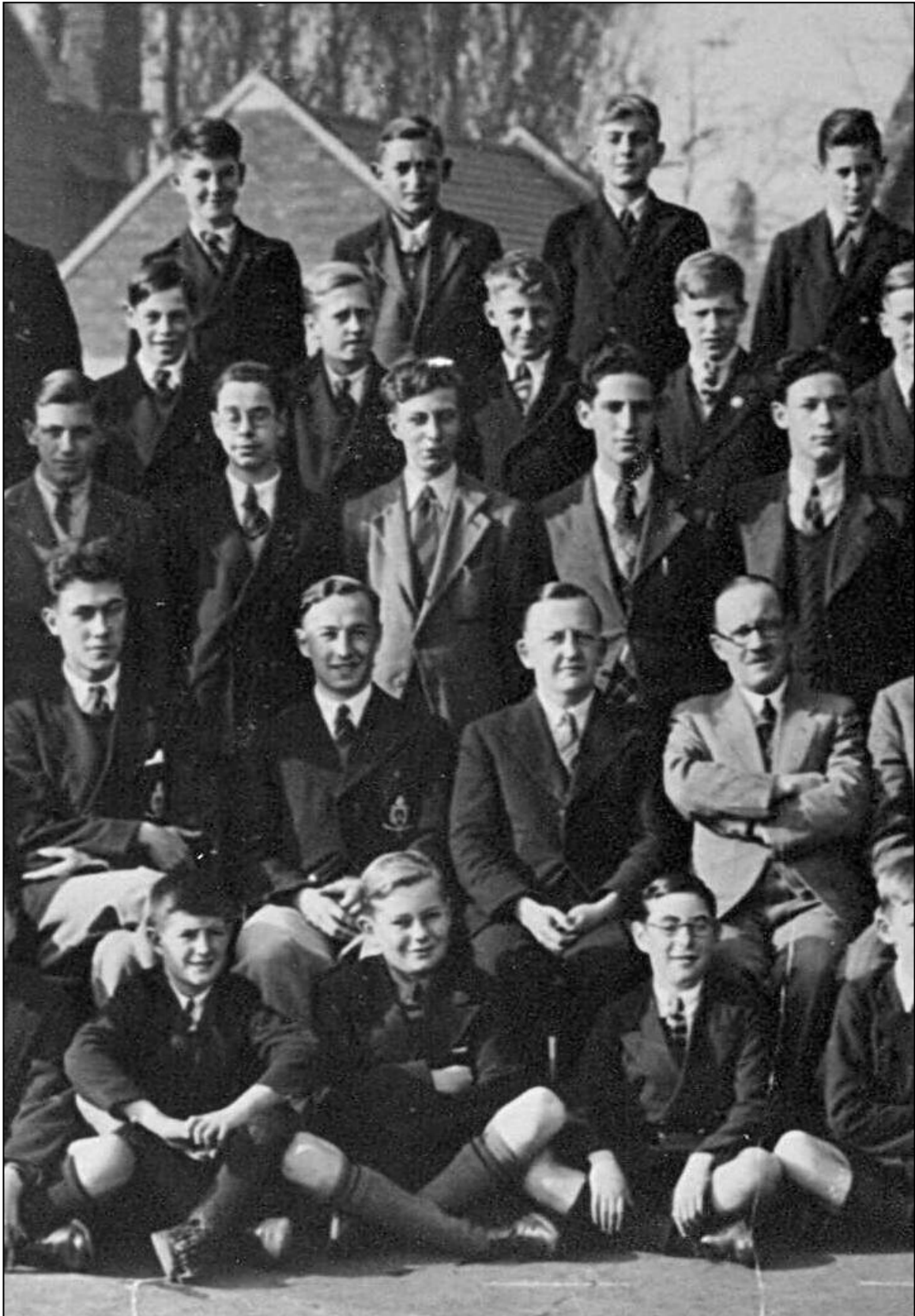
SECTION 2

1940



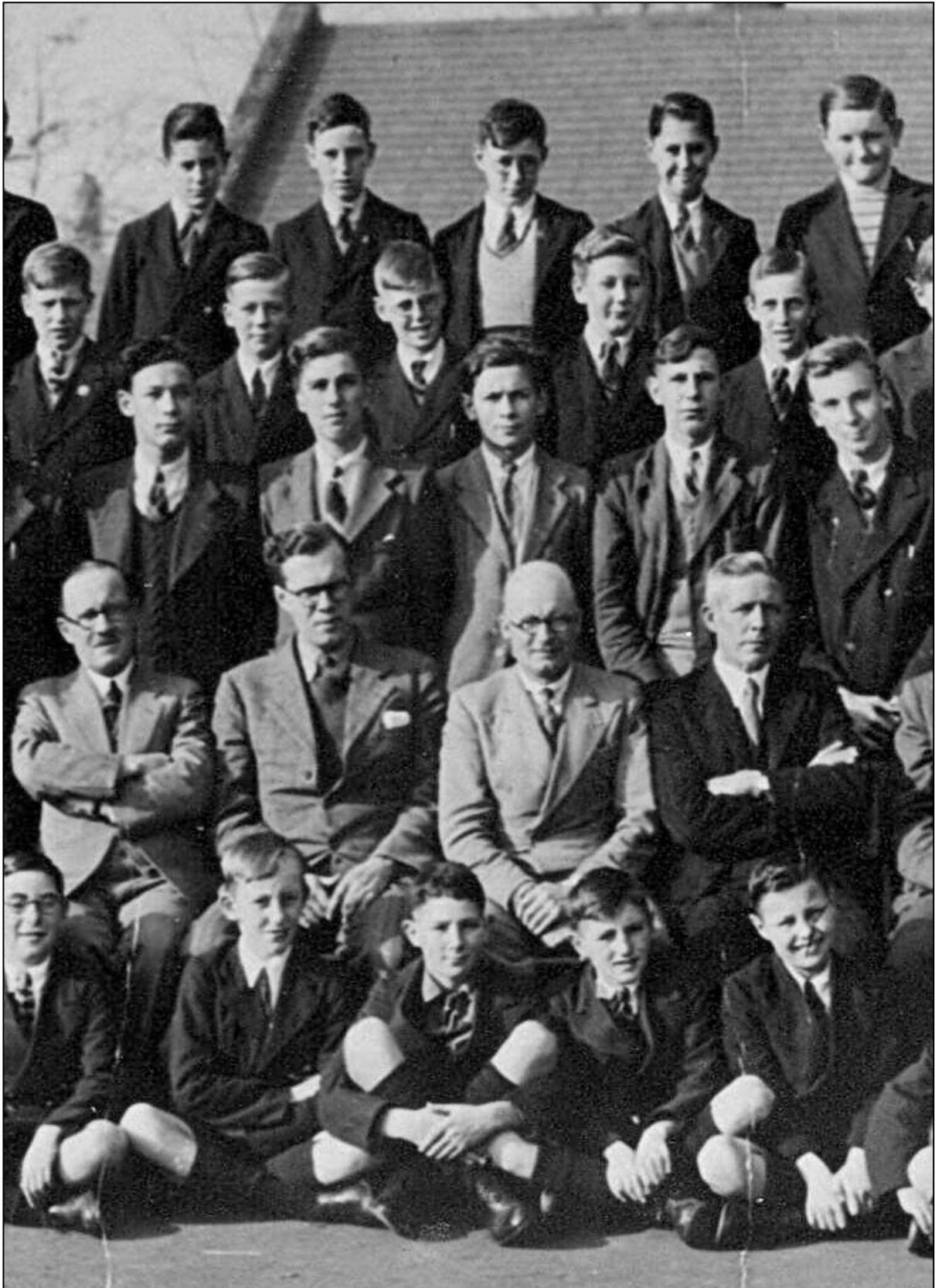
SECTION 3

1940



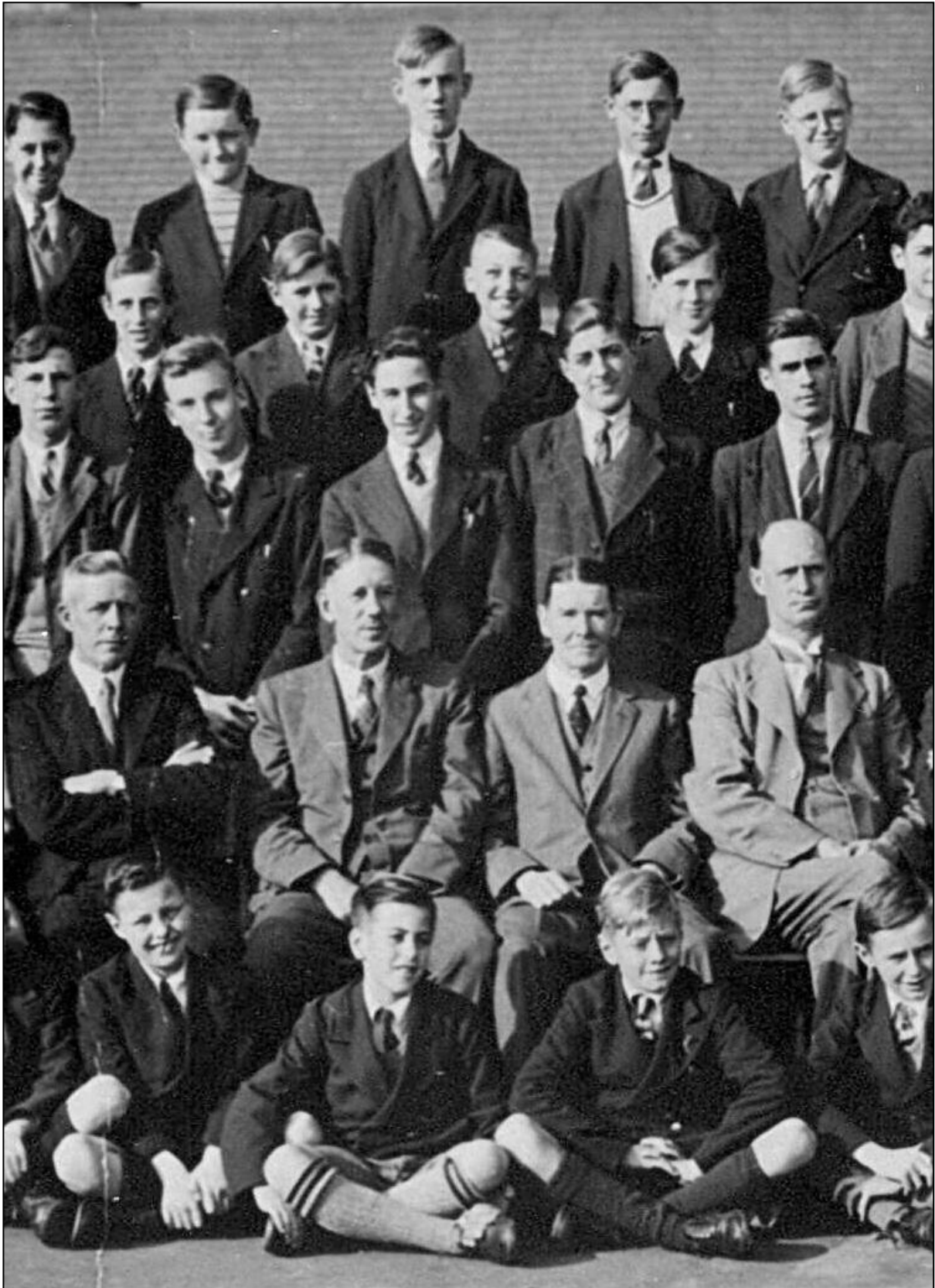
SECTION 4

1940



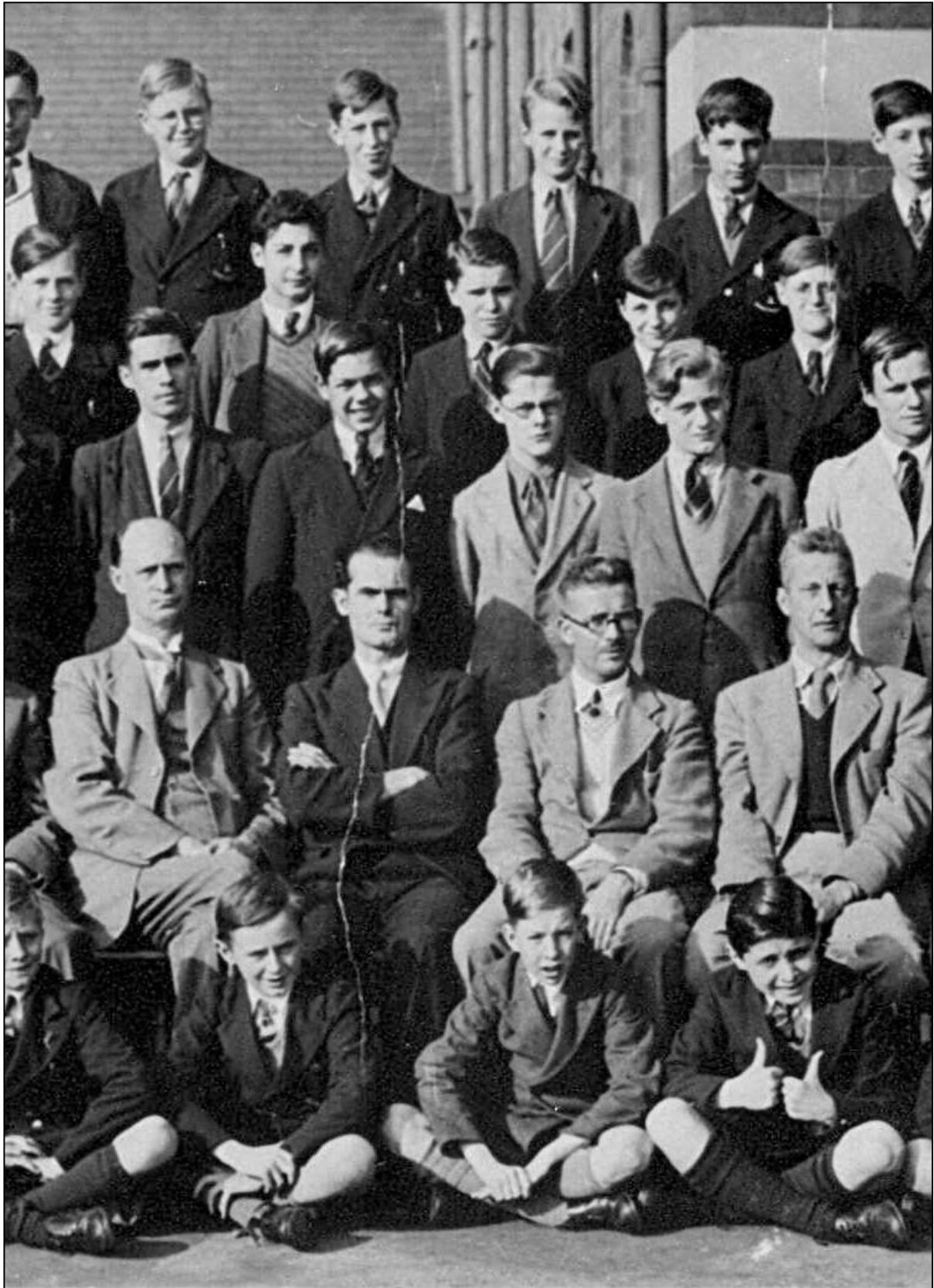
SECTION 5

1940



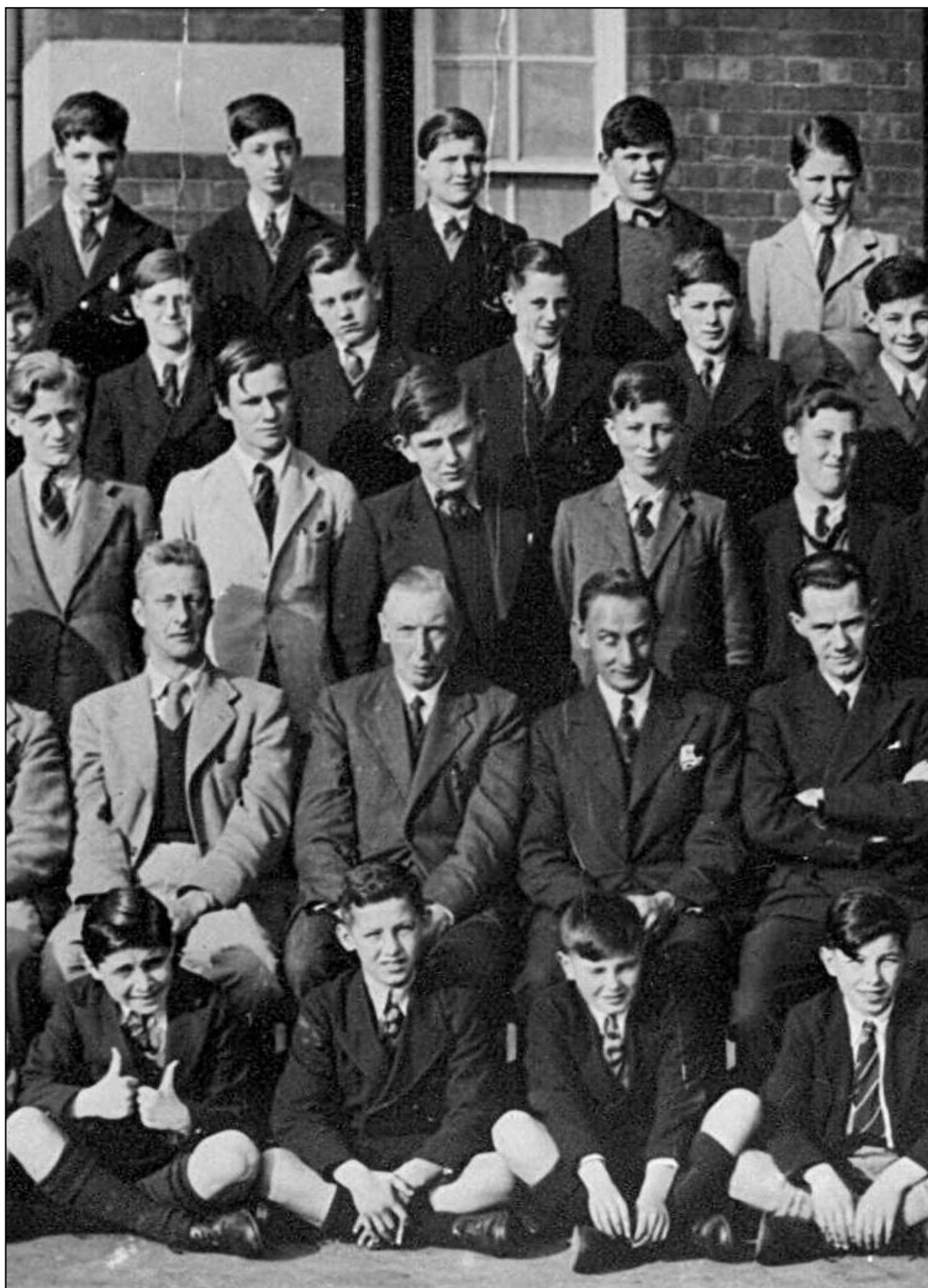
SECTION 6

1940



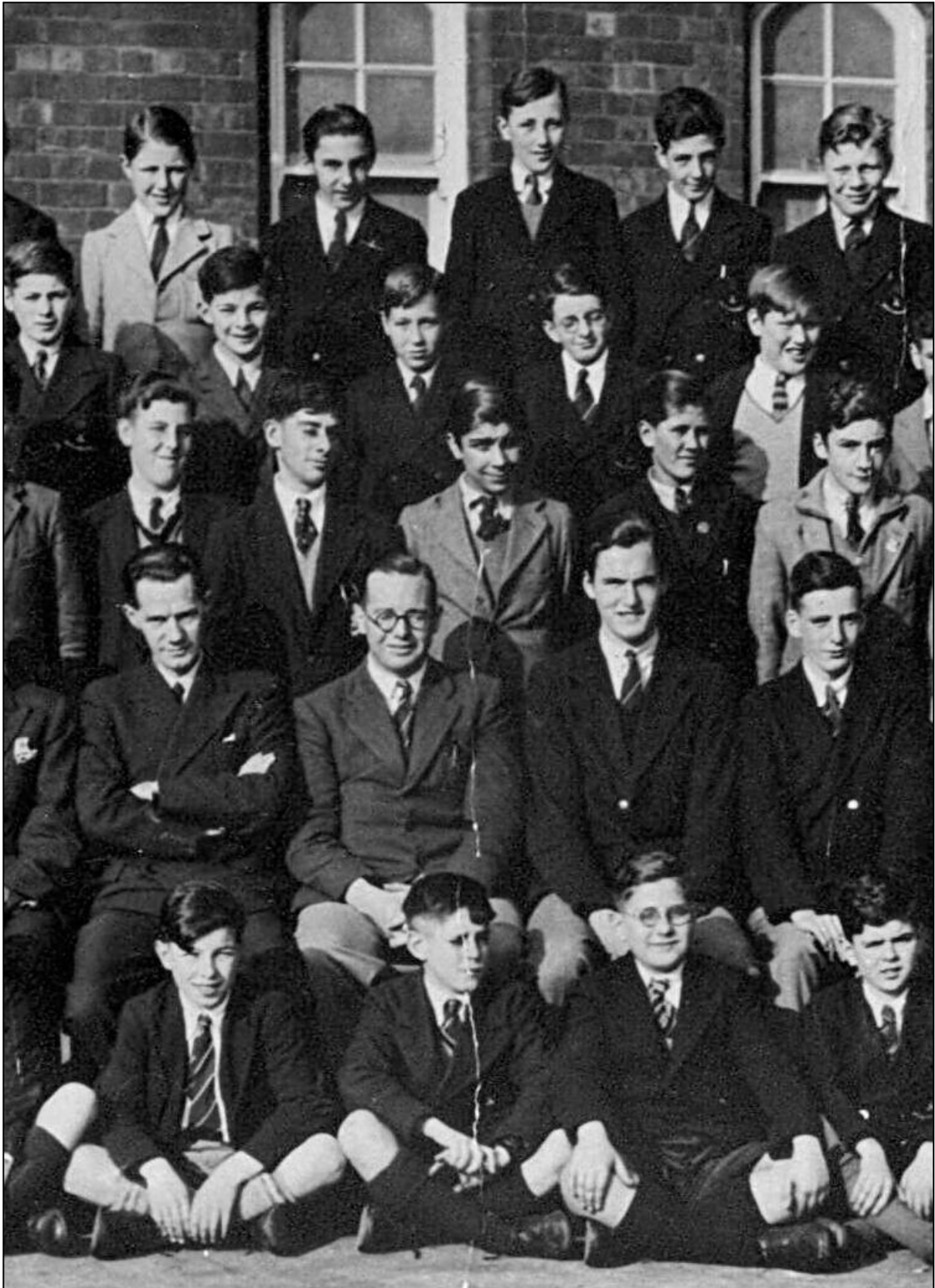
SECTION 7

1940



SECTION 8

1940



SECTION 9

1940



SECTION 10

1940



SECTION 11

1940



SECTION 12