



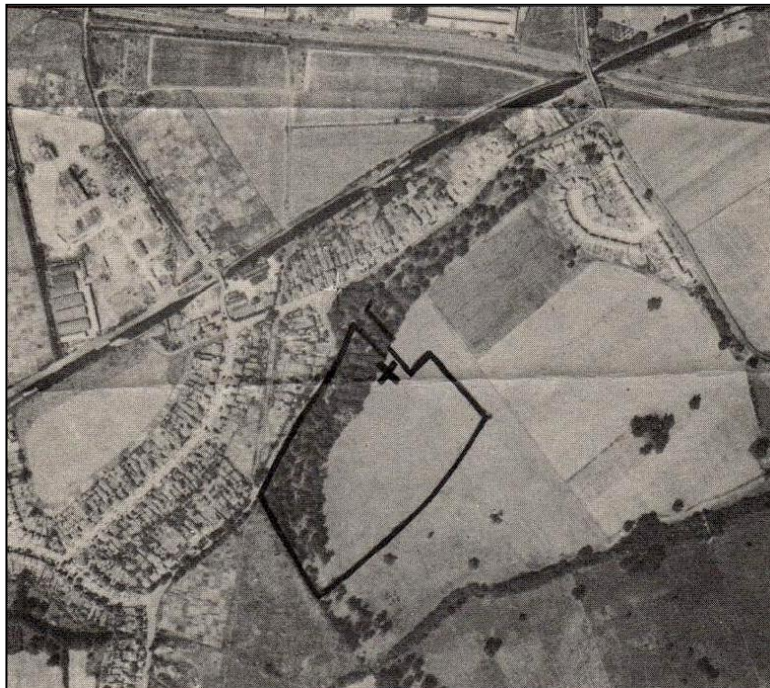
KILBURN GRAMMAR SCHOOL  
OLD BOYS' ASSOCIATION.

"THE OLD CREIGHTONIANS"

Dear Sir,

March 1960

SPORTS GROUND



Aerofilms Limited

Way back in December 1955 we issued a very special letter. If you were an O.B. then, you must remember it well. Among other things, it asked you for £10,000. Among other things, you didn't send it.

Well, that was four years ago. There have been many developments since then, for the Sports Sections and your Executive Committee have kept on probing this mammoth project, and a great landmark in the history of the Association was achieved recently, when the Rugby Club secured a loan of £5,000 from the Rugby Football Union, and the Sports Sections raised a further £550 or so from their own members.

This sum has made possible the purchase of 11 acres of virgin meadow and woodland adjoining Tentelow Lane, Southall (we are already beginning to call it Osterley); and it will also cover some of the costs of ploughing, harrowing, sowing, building etc., to produce 2 Rugby pitches, 2 Hockey pitches, a Cricket square and, of course, a Pavilion.

So in September 1960, the Sports Sections should be chasing the appropriate ball on OUR OWN SPORTS GROUND, and caressing the pewter tankard in OUR OWN PAVILION, - in YOUR OWN PAVILION, for all Old Creightonians will belong there, and the whole Association will at last have a "a home of its own" all the year round, with the proper Club-house atmosphere to warm the spirit.

(The spot marked 'X' in the photograph shows where the envisaged Pavilion will stand). Our main appeal is for money; but in a scheme of this nature there is scope for help of a different type, - supplies of raw materials, provision of services, and so on.

The design of the Pavilion will follow normal lines - changing room accommodation, bathing facilities, tea room, bar, kitchen and other services essential to the activities of the Sports Sections. Although the design is being handled by the Sports Sections, we want to be sure that any ideas you may have are incorporated, either now or at a later date. Please remember that this project concerns all Association members. PETER HART is in charge of the plans and any suggestions or offers of help (supplies or services) should be addressed to him (see below).

We are on the lookout for building materials which can be supplied cheaply (or at no cost at all !). We have architect, surveyor, and sanitary engineer; but anyone who has experience in any aspect of building is warmly invited to assist in the project.

Work is scheduled to commence this month, to complete in time for September use, so please reply immediately, on one or both of the forms below, or by separate letter or telephone call.

Now about the MONEY ..... The £5,000 loan from the Rugby Football Union is, of course, a wonderful thing. It means that, in contrast to 1955, we no longer have to ask you for money to buy the land. We can now lower our sights somewhat, for the target is no longer so distant. We must seek your financial support in order to

- (a) complete the cultivation of the ground in time for September 1960,
- (b) construct the Pavilion, drains and access-road, and
- (c) Make the capital repayments and interest payments on the R.F.U. loan which will fall due for the first year, i.e., while our Sports Sections' subscriptions are still having to pay the rents of other grounds, until our own ground is ready for use (after which the sections' subscriptions can be used for loan-repayments).

Here are a few vital statistics:-

Cost of ground to date:-

Land purchase (11 acres)	£3470
Cultivation	820
Other expenses	33
Cost of water supply to ground	26
Total	£4349

The above has been financed as follows:-

Loan from R.F.U. so far	£3500
Donations from Hockey Club	204
Donations from Rugby Club	349
Donations by Old Boys other than those in Sports Sections	24
Loan from Life-membership fund of O.B.A.	270
Other income,- Dance, Interest etc.	20
Total	£4367

We thus have a cash balance at the moment of £18

So may we tempt you to support this handsome venture by sending us a donation, or making us an interest-free loan forthwith?

Some of you gallantly made your offers in 1955, or at last year's Annual Dinner.

Please let your money come rolling in... and FAST ! ..... for this is such a very worthwhile business !

FLOREAT KILBURNIA ET CREIGHTONIA !

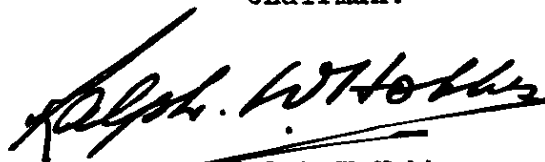
Yours sincerely,



Peter H. Howe,  
Chairman.



Alan Lyford  
Rugby Club.



Ralph W. Hobbs,  
Immediate Past Chairman.



Stan Hutton,  
Hon. Treasurer.



J. Lemon Burton,  
Hockey Club.



KILBURN GRAMMAR SCHOOL  
OLD BOYS' ASSOCIATION.

"THE OLD CREIGHTONIANS"

JUNE 1960

Dear Sir,

GROUND FUND PROJECT - PROGRESS REPORT



Much activity has taken place in the last few weeks. The photograph above shows one of the teams of week-end volunteers hard at work digging. Besides preparing the foundations of the Pavilion, these teams have sweated and toiled in clearing brush and shrub, so that we have a car park in readiness for the coming season. The grass, sown last year, is now spread as a luxurious verdant blanket over the ground, the harbinger of enjoyable times to come. By September, we shall be the proud possessors of a first class sports ground.

All this is not achieved without hard work and money. A vast amount of the former has been spent on this venture and the Committee are most grateful for the generous financial support given by so many members. Full details of the cost to date and the way these costs have been met are shown in the Hon. Treasurer's Report accompanying this letter. In essence, the whole venture has already been financed with the exception of the pavilion. Estimated capital cost of the pavilion

is £3,500, towards which we have £2,100 available. Thus we are faced with the relatively easier task of raising a final £1,400. We would be most grateful if all those members, who have decided to support this project - surely everyone - but who have not yet forwarded a donation or promised a loan, would send cheques or promises to the Hon. Treasurer at the address below.

Eighteen months ago, this scheme seemed just a dream on the part of a few farsighted members of the Association. Now the venture is well on the way to lasting success. Please turn this dream into an accomplished fact through the means of your support in whatever way you are able to help.

Yours sincerely,



Peter H. Howe,  
Chairman.

All replies to :-

Hon. Treasurer (Stan Hutton)  
2, Aylesbury Street,  
Neasden,  
London, N.W.10.